

# ENTRY FORM

## 2026 NORTHWEST REGIONAL LEVER ACTION SILHOUETTE MATCH MISSOULA, MONTANA SEPT. 5<sup>th</sup> & 6<sup>th</sup>

Name: \_\_\_\_\_

Phone: \_\_\_\_\_

Address: \_\_\_\_\_

E-mail: \_\_\_\_\_

CURRENT NRA CLASSIFICATION (Please circle appropriate classes)

Small bore Lever action Rifle	Master	AAA	AA	A	B
Pistol Lever action Rifle	Master	AAA	AA	A	B
Lever action Rifle (high power)	Master	AAA	AA	A	B

Entry Fee (One gun = \$60.00, Two gun = \$80.00, Three guns = \$100.00)

Juniors shoot half price.

Entry dead line: **Aug. 15th**

Match capacity:                      64 small bore lever & pistol cartridge lever competitors  
    48 Big bore lever competitors

Total: \_\_\_\_\_

There will be a barbecue after the conclusion of Saturday's competition. The barbecue will be \$28.00 per person this year: if you wish to attend please add this to your entry fee from above.

Don't miss out on great baby back ribs and all the fixings.

Number of people who will be attending the barbecue. \_\_\_\_\_ Dinner total: \_\_\_\_\_

Grand Total: \_\_\_\_\_

I would like to be squaded with (one person) : \_\_\_\_\_

Please indicate if you are sharing a rifle with someone, so we can squad accordingly. Last minute changes are very difficult for all of us running the match and cause great confusion with other shooters.

Please remit to:                      **Hellgate Civilian Shooters Association,**  
    C\O Match Director: Mike Cassidy,  
    5552 East Side Hwy.  
    Stevensville, MT 59870  
    (406) 240-5591

**AWARDS:**            The NRA will provide Gold, Silver, and Bronze awards for the high point aggregate in each of the three guns. The sponsor will provide the three gun regional championship award and aggregate class winners for matches. Sponsor will also provide a High point Junior, High point woman, and High point senior providing there are at least 3 competitors in each class.

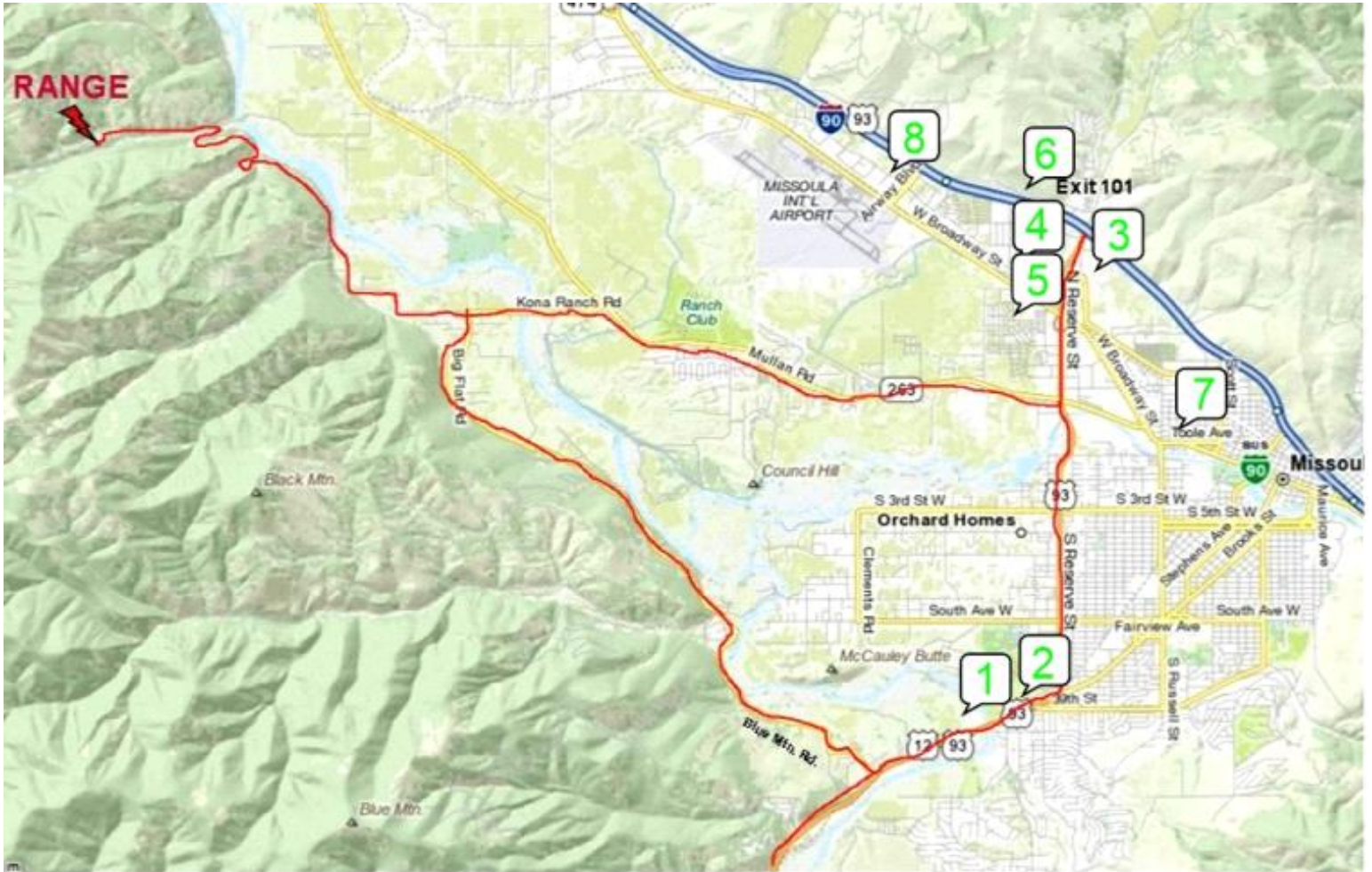
Individual match awards will be given upon completion of that match. All aggregate and high point awards will be given after the final match on Sunday afternoon.

**MISCELLANEOUS:** Camping is allowed at the range, but no water or electric is available.



**Hotels:** Here are a few moderate priced with many others in the area.

1. Super 8 Motel Missoula – Brooks street/South Reserve
2. FairBridge Inn Suites & Conf. – Brooks street/South Reserve
3. Quality Inn & Suites – North Reserve
4. Super 8 Motel Missoula – North Reserve
5. My Place Missoula – North Reserve
6. Red Lion Inn Missoula – West Broadway
7. Stone Creek Lodge – Airport Blvd.

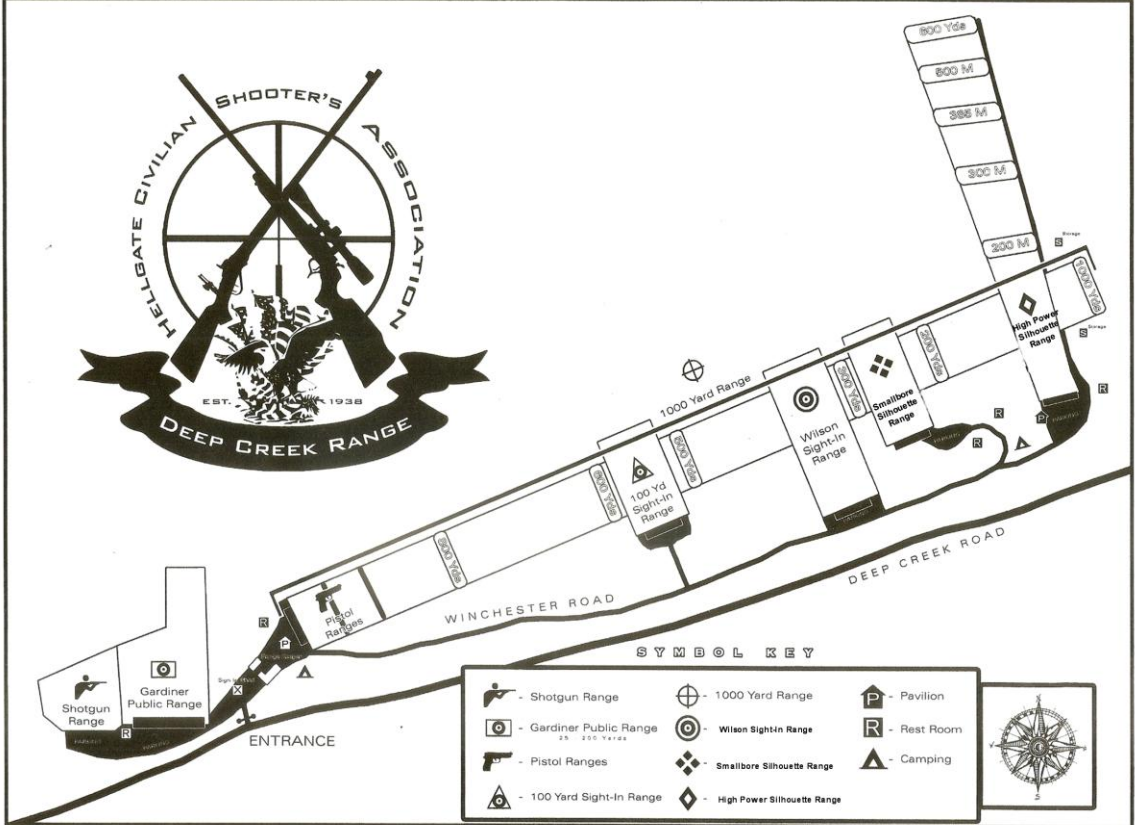


**Restaurants:** Here are a few with many other chains in the area.

- |                                       |                                   |
|---------------------------------------|-----------------------------------|
| Montana Club – Brooks St.             | Fiesta En Jalisco – North Reserve |
| Mackenzie River Pizza – Brooks St.    |                                   |
| Cracker Barrel – North Reserve        |                                   |
| Famous Daves BBQ – North Reserve      |                                   |
| Mackenzie River Pizza – North Reserve |                                   |
| Montana Club – North Reserve          |                                   |

**Grocery Stores:**

- |                            |                          |
|----------------------------|--------------------------|
| Yokes – Brooks St.         | Roseaurs – South Reserve |
| Alberstons – North Reserve | Yokes - Broadway         |



SYMBOL KEY

	- Shotgun Range		- 1000 Yard Range		- Pavilion
	- Gardiner Public Range		- Wilson Sight-In Range		- Rest Room
	- Pistol Ranges		- Smallbore Silhouette Range		- Camping
	- 100 Yard Sight-In Range		- High Power Silhouette Range		

